

ANDERSON'S WEST ACRES

PAGES 137 & 138 OMITTED

IN WEBER COUNTY

AMENDED LOTS 1, 2 & 15

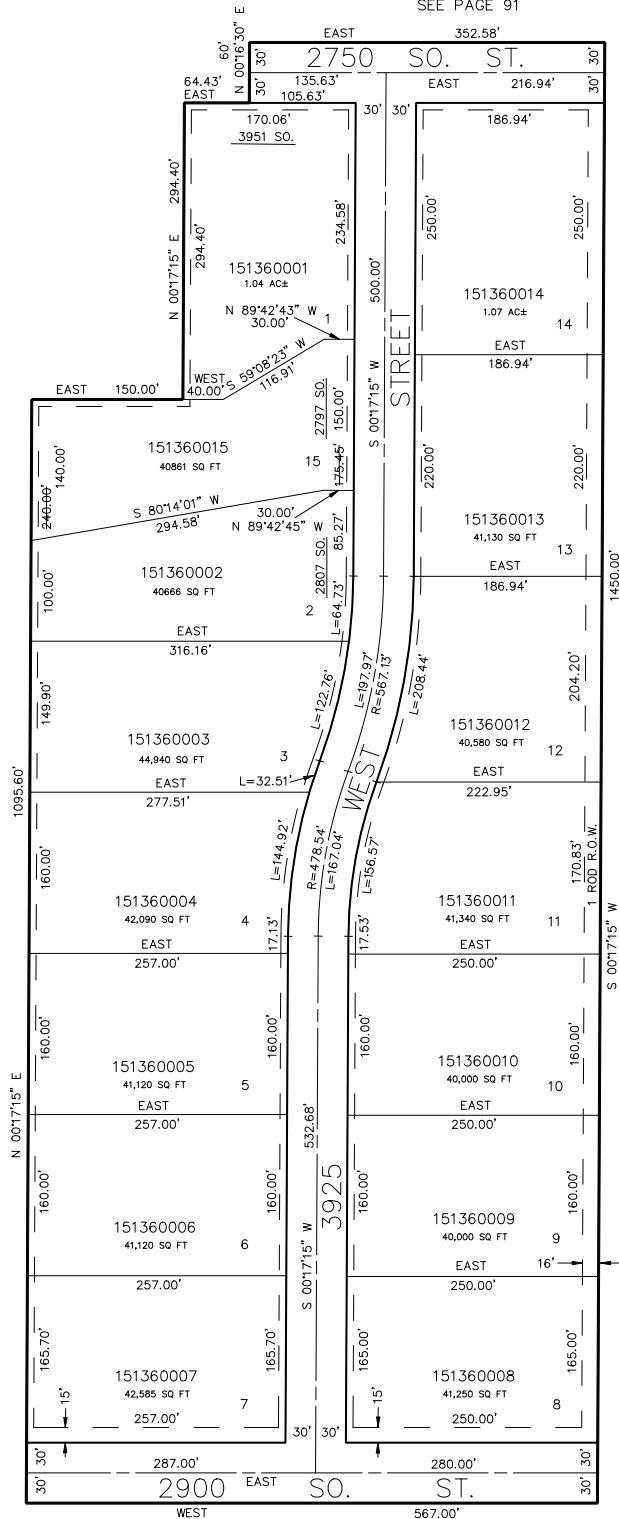
TAXING UNIT: 53

SCALE 1" = 100'

SEE PAGE 91

SEE PAGE 90

SEE PAGE 88



FOR COMPLETE ENG DATA SEE
ORIGINAL DEDICATION PLAT IN
BOOK 21, PAGE 95 OF RECORDS.

FOR AMENDED PLAT SEE
BOOK 39, PAGE 13 OF RECORDS.

7' UTILITY & DRAINAGE EASEMENTS EACH
SIDE OF PROPERTY LINES AS INDICATED
BY DASHED LINES EXCEPT AS OTHERWISE
SHOWN.